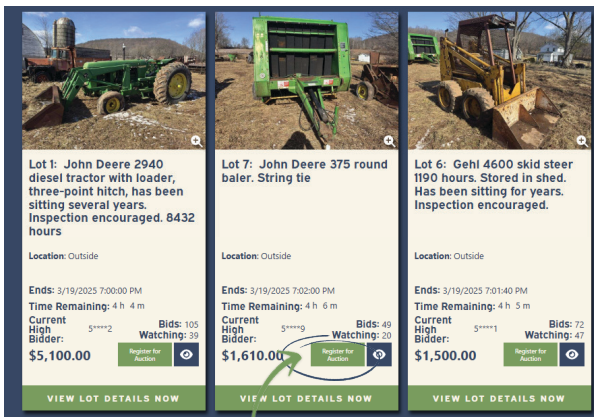


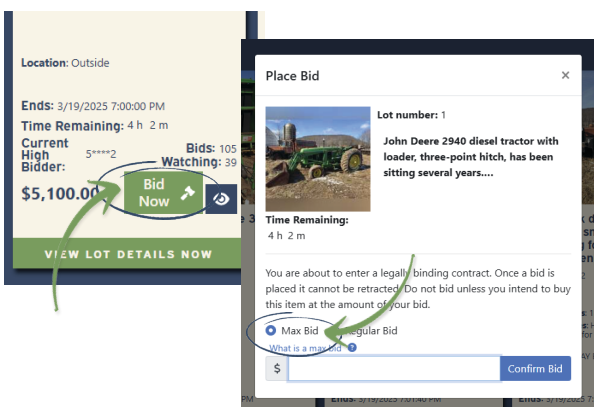
ACCOUNT CREATION

- We updated our bidding software on October 15, 2024. ALL users will need to create an account within our new bidding software; NO accounts were rolled over from before.
- It is possible that your computer will “remember” your username and password from our old bidding software and try to log in with those credentials and fail. Instead, chose the “Register” option and follow the steps provided. If you have any issues, please call our office M-F between 8:30am and 4:30pm.
- This is a one-time process.



REGISTERING FOR AN AUCTION

- Our software will prompt you to register for each auction you are interested in bidding in. By registering you will be added to the auction. This will help us communicate with you if needed as the auction progresses, i.e. lot updates, pickup changes, etc.
- Registering for an auction will “ping” your credit card for \$1 which is never removed from your account. This temporary hold will only last 24-36 hours.



MAX BID FEATURE

- Our site provides a “max bid” option which allows you to set a top bidding limit for an individual item.
- The software encrypts this amount so that other users can not view your max bid.
- The software will NOT allow you to bid against yourself and will only bid on your behalf if there is another person bidding on that item.

Continued...

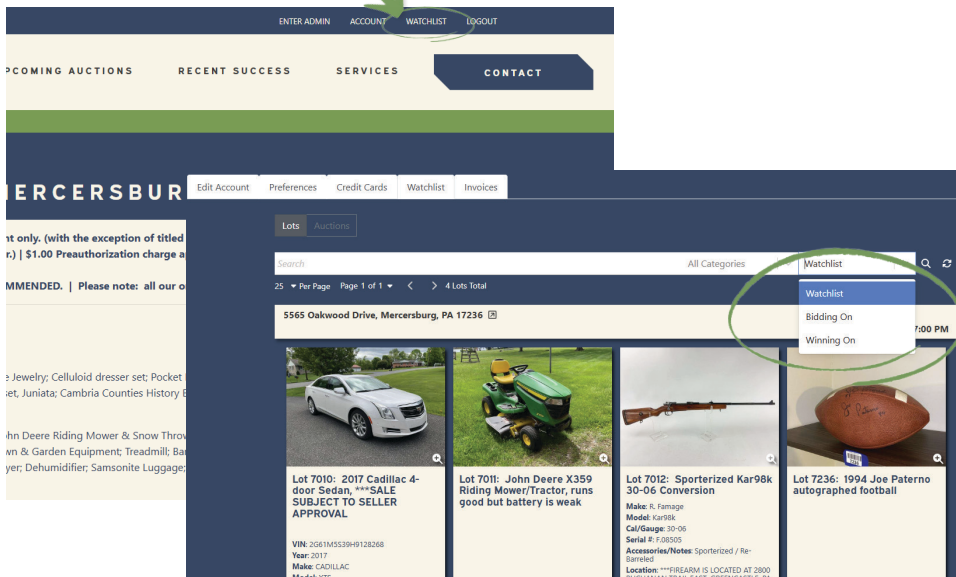
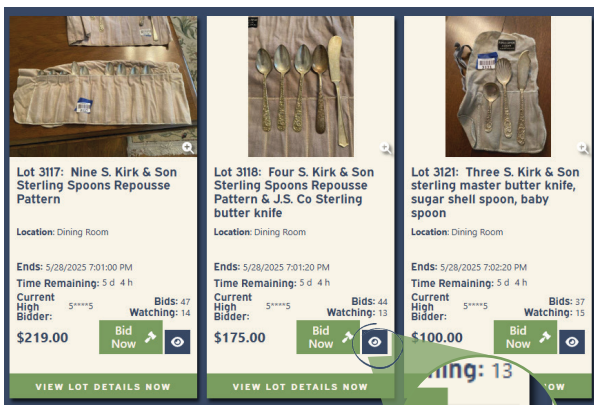


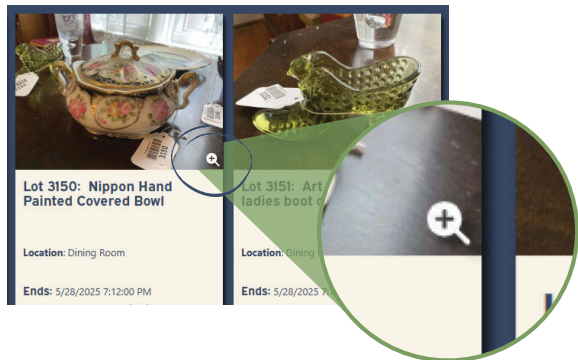
MAX BID FEATURE (CONTINUED)

- Please remember that multiple people could have max bids set for the same item. If you enter a max bid and see a flurry of bidding, it is most likely a sequence of max bids outbidding each other.

WATCHLIST

- In order to add an item to your watchlist, first make sure you are logged in to your bidding account, then you click on the eyeball/watch button. The button will turn green.
- To view your watchlist: click on the WATCHLIST tab at the very top right-hand side of your browsing window.
*If you do not see this option, most likely you are not logged in.
- From the watchlist tab, you can also select "Bidding On" or "Winning On" to view those results.





TO PREVIEW PHOTOS

- If you wish to look at the photos closer, or to preview the photos without loading the item details page, click on the plus sign/magnifier icon on the bottom right corner of the photo box.
- This will reduce loading time and maintain your position within the catalog.

OTHER NOTES

- **Titled vehicles and any invoice that totals at \$5,000+** will need to complete payment by:
 - Cash (brought to office)
 - Cashier's check, certified funds, bank check
 - Wire transfer. *We will provide a step by step guide for wire transfers to all those who wish to complete payment in this manner.*
- **We do not offer shipping.** While Hurley Real Estate & Auctions does not provide shipping services, we recognize that some buyers may need assistance with item pick-up. To accommodate this, we maintain a list of independent service providers who may assist you with picking up items or picking up on your behalf.

Important Note: These service providers are not employees, agents, or affiliates of Hurley Real Estate & Auctions. If you choose to use their services, you do so at your own risk. Hurley Real Estate & Auctions assumes no responsibility or liability for any issues, damages, or mistakes that may occur while using their services. We recommend that you communicate clearly with your chosen provider, verify their credentials, and understand their terms before engaging their services.

Shipping/pickup providers: The following companies are familiar with our auctions. Please contact them directly to inquire about pick up and/or shipping. You ***MUST*** contact them prior to the auction closing to schedule your pickup and make payment arrangements. Once you have won the item(s), we suggest sending them a copy of your paid invoice. They may need you to help them with dimensions and weight. Remind them of the place and time of pickup.

- **Mountain View Farm & Garden Supply** | Joel/Vernon/Larwin, (717) 375-4010
joel@mtviewfarmsupply.com, www.mtviewfarmsupply.com
- **The \$25.00 Guy** | Paul Brown, 937-657-1406, pbrowntroy@aol.com
- **S.L.T. Transport** | Josh Clarke, 717-655-4158